

SEE SHEET 47

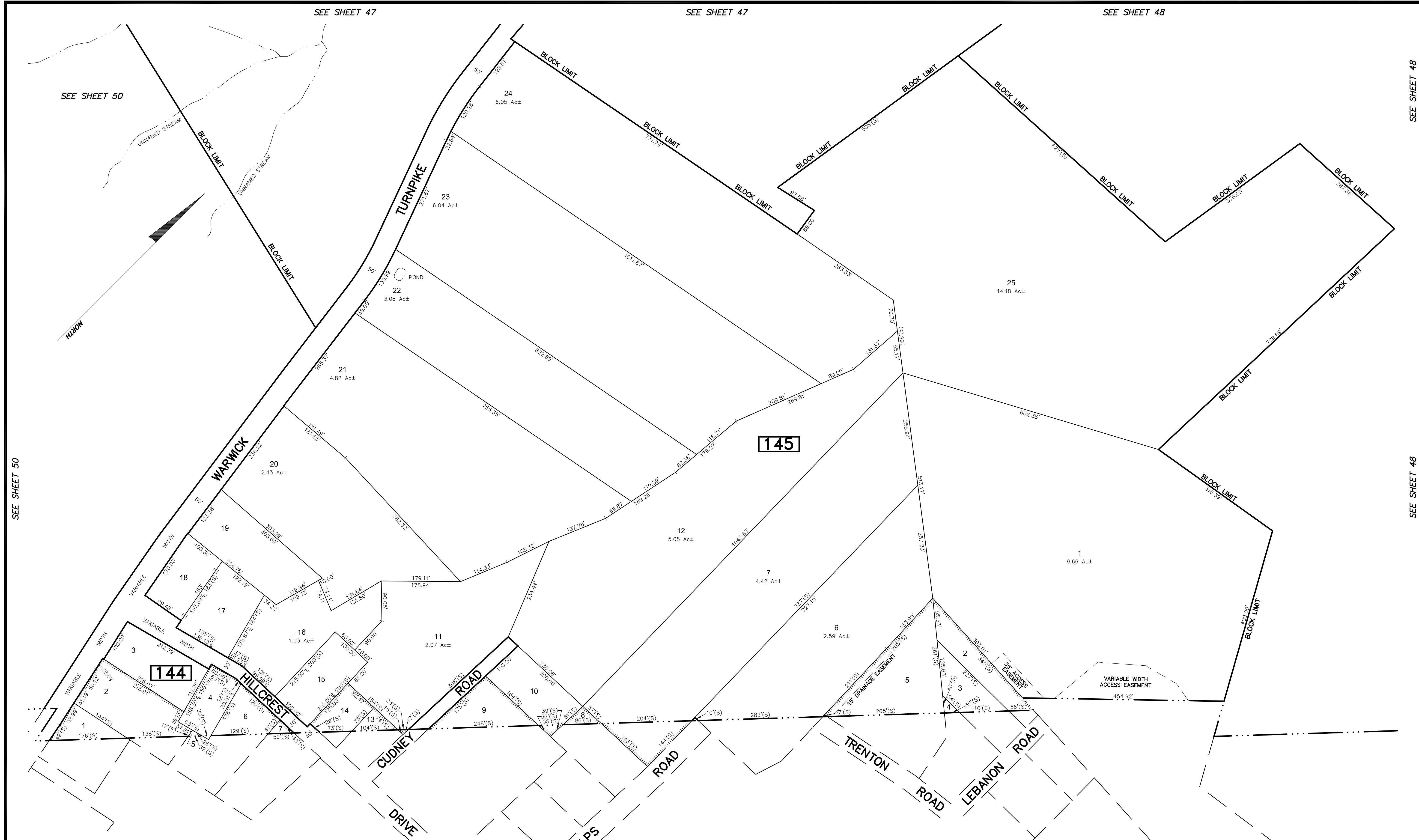
SEE SHEET 47

SEE SHEET 48

SEE SHEET 50

SEE SHEET 48

SEE SHEET 48



REVISIONS				
DATE	BY	LIC.NO	BLOCK	LOT

**TOWNSHIP OF
WEST MILFORD
PASSAIC COUNTY**

This map has been drawn using Computer Aided Drafting/Design (CAD/D) and Coordinated Geometry (COGO).

THIS MAP HAS BEEN GIVEN A FORMAL CERTIFICATION BY THE DIVISION OF TAXATION ON FEBRUARY 11, 2019, SIGNED BY SHELLY RIELLY, CTA AND ASSIGNED SERIAL NUMBER 1097

**TAX MAP
TOWNSHIP OF VERNON**
SUSSEX COUNTY, NEW JERSEY
SCALE: 1" = 100' NOVEMBER, 2017
RICHARD A. SCHULZ, P.E., P.L.S.
SPATIAL DATA LOGIC
285 DAVIDSON AVENUE
SOMERSET, NEW JERSEY, 08873
TO SHOW CONDITIONS AS OF SEPTEMBER 2021