

REVISIONS				
DATE	BY	U.C.N.O.	BLOCK	LOT
10/2/2020	ED CLAY - ARH	34842	126	6-9
10/2/2020	ED CLAY - ARH	34842	126	11-12

This map has been drawn using Computer Aided Drafting/Design (CAD/D) and Coordinated Geometry (COGO).

SEE SHEET 41

SEE SHEET 41

SEE SHEET 42

SEE SHEET 42

SEE SHEET 15

SEE SHEET 15

SEE SHEET 41

SEE SHEET 40

SEE SHEET 40

SEE SHEET 40

SEE SHEET 40

SEE SHEET 40

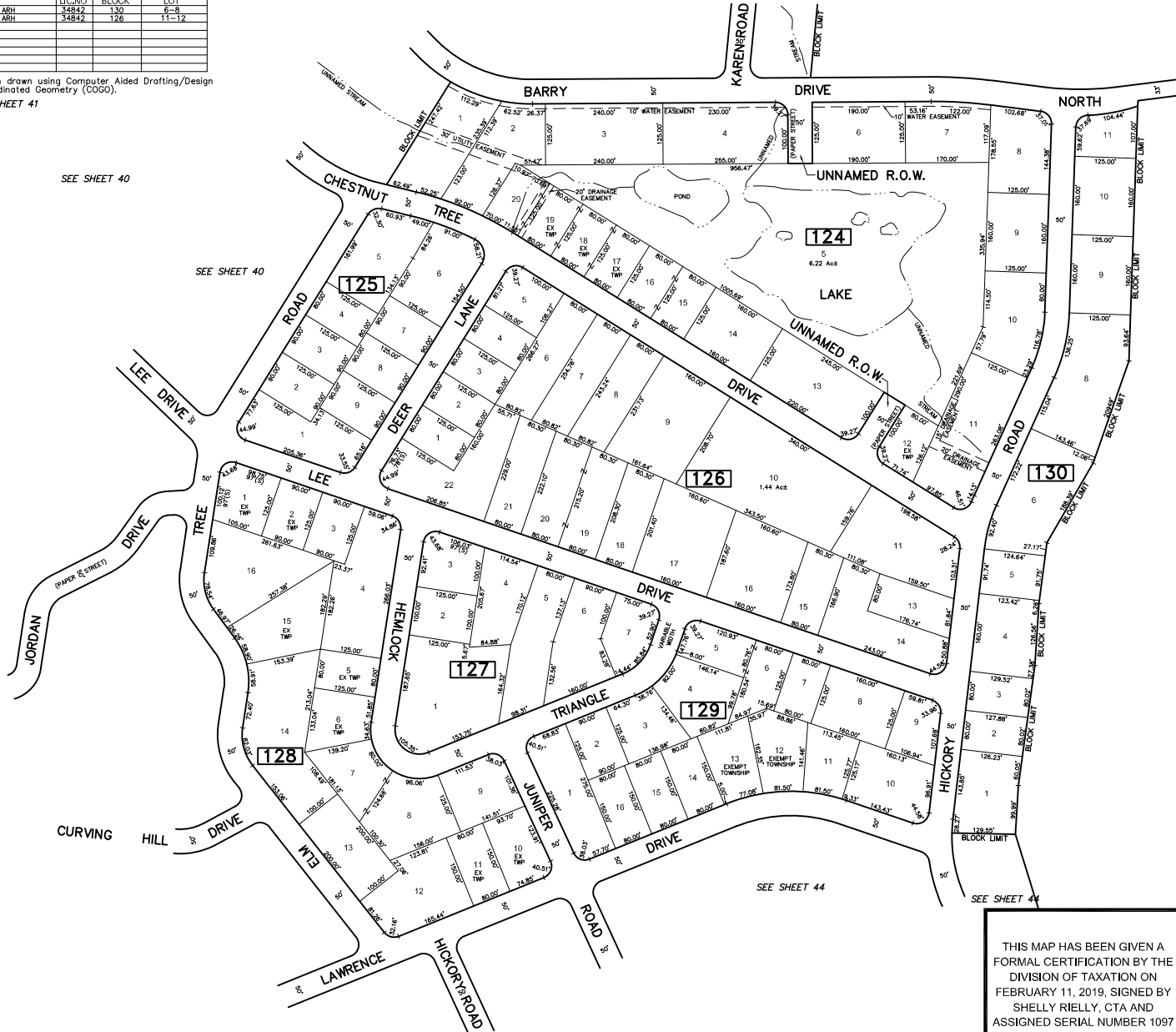
SEE SHEET 40

SEE SHEET 44

SEE SHEET 44

SEE SHEET 44

SEE SHEET 44



SEE SHEET 15

SEE SHEET 17

SEE SHEET 17

THIS MAP HAS BEEN GIVEN A  
 FORMAL CERTIFICATION BY THE  
 DIVISION OF TAXATION ON  
 FEBRUARY 11, 2019, SIGNED BY  
 SHELLY RIELLY, CTA AND  
 ASSIGNED SERIAL NUMBER 1097

**TAX MAP**  
**TOWNSHIP OF VERNON**  
 SUSSEX COUNTY, NEW JERSEY  
 SCALE: 1" = 100' NOVEMBER, 2017  
**RICHARD A. SCHULZ, P.E., P.L.S.**  
 SPATIAL DATA LOGIC  
 285 DAVIDSON AVENUE  
 SOMERSET, NEW JERSEY, 08873  
TOWNSHIP CONDITIONS AS OF OCTOBER 31, 2023