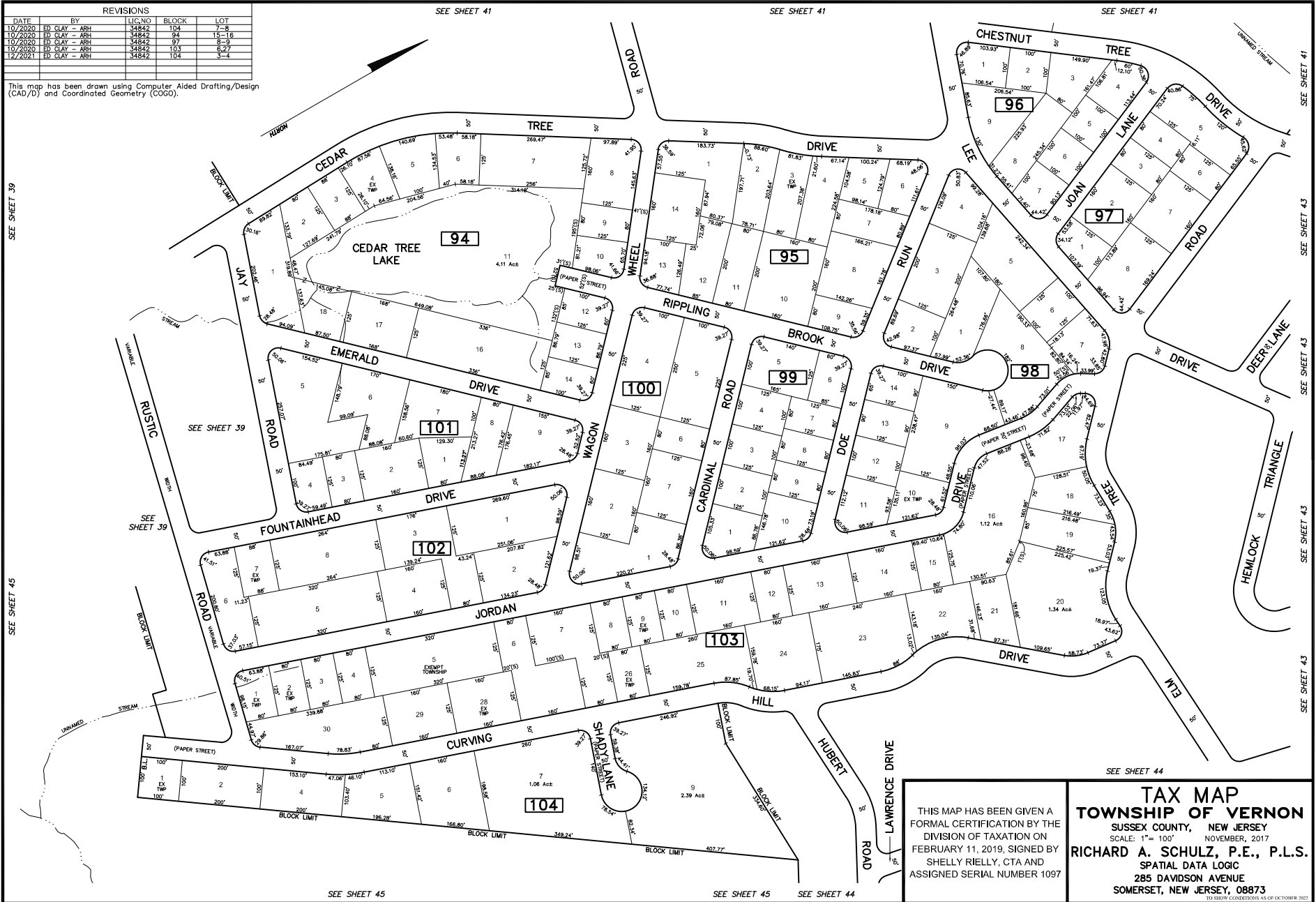


REVISIONS				
DATE	BY	LIC. NO.	BLOCK	LOT
10/2020	ED CLAY - ARH	34842	104	7-8
10/2020	ED CLAY - ARH	34842	94	15-16
10/2020	ED CLAY - ARH	34842	97	8-9
11/2020	ED CLAY - ARH	34842	103	5-7
12/2021	ED CLAY - ARH	34842	104	3-4

This map has been drawn using Computer Aided Drafting/Design (CAD/D) and Coordinated Geometry (COCO).



SEE SHEET 44

TAX MAP
TOWNSHIP OF VERNON
 SUSSEX COUNTY, NEW JERSEY
 SCALE: 1" = 100' NOVEMBER, 2017
 RICHARD A. SCHULZ, P.E., P.L.S.
 SPATIAL DATA LOGIC
 285 DAVIDSON AVENUE
 SOMERSET, NEW JERSEY, 08873
TO BE DRAWN/CONDITIONS AS OF OCTOBER 31, 2021

THIS MAP HAS BEEN GIVEN A FORMAL CERTIFICATION BY THE DIVISION OF TAXATION ON FEBRUARY 11, 2019, SIGNED BY SHELLY RIELLY, CTA AND ASSIGNED SERIAL NUMBER 1097