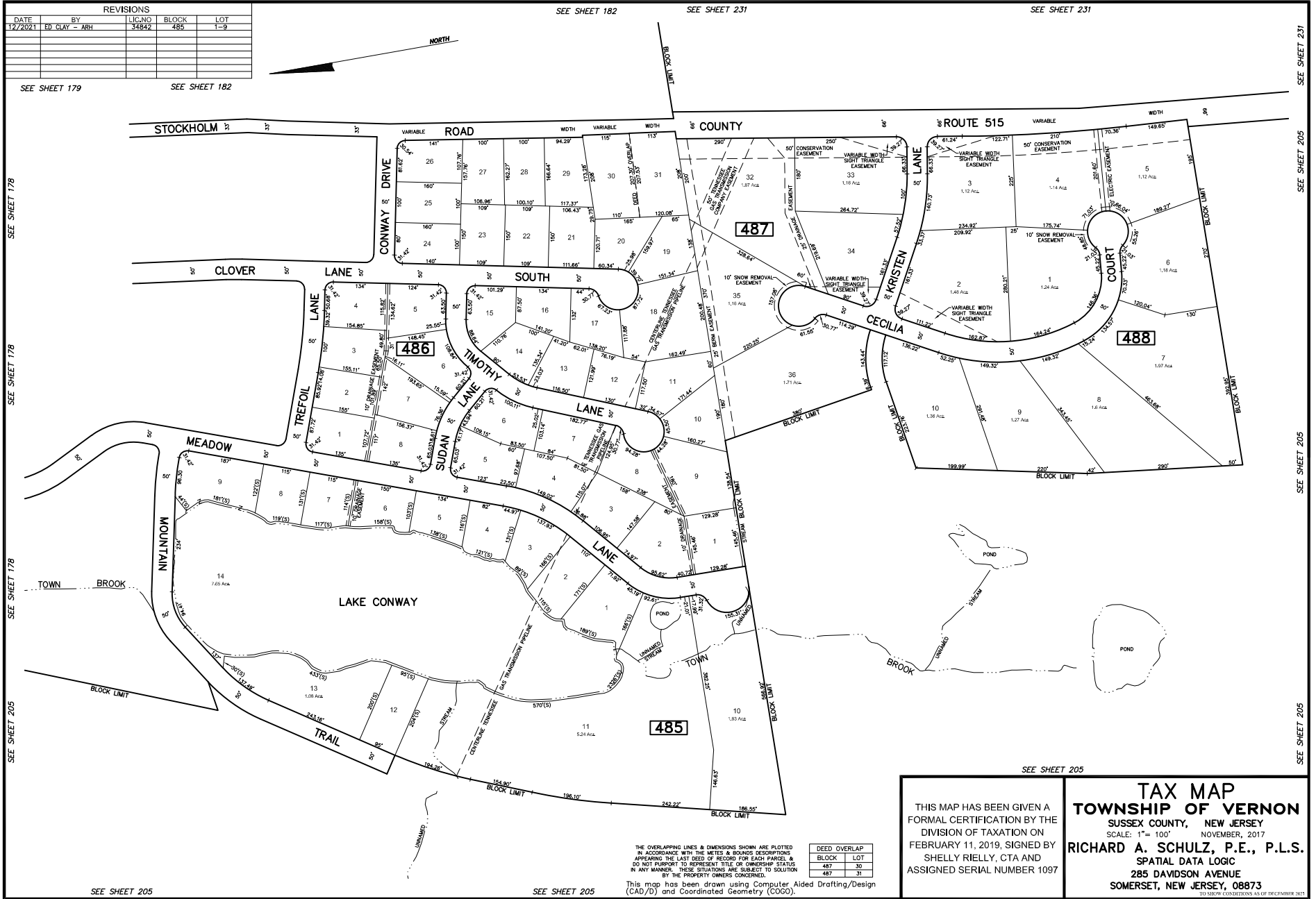


REVISIONS				
DATE	BY	LIC. NO.	BLOCK	LOT
12/7/2021	ED CLAY - ARH	34852	485	1-9

SEE SHEET 179 SEE SHEET 182



THE OVERLAPPING LINES & DIMENSIONS SHOWN ARE PLOTTED IN ACCORDANCE WITH THE METES & BOUNDS DESCRIPTIONS APPEARING IN THE LAST DEED OF RECORD FOR EACH PARCEL, & DO NOT PURPORT TO REPRESENT TITLE OR OWNERSHIP STATUS IN ANY MANNER. THESE SITUATIONS ARE SUBJECT TO SOLUTION BY THE PROPERTY OWNERS CONCERNED.

This map has been drawn using Computer Aided Drafting/Design (CAD/D) and Coordinated Geometry (COGO).

DEED OVERLAP	
BLOCK	LOT
487	30
487	31

SEE SHEET 205

THIS MAP HAS BEEN GIVEN A FORMAL CERTIFICATION BY THE DIVISION OF TAXATION ON FEBRUARY 11, 2019, SIGNED BY SHELLY RIELLY, CTA AND ASSIGNED SERIAL NUMBER 1097

TAX MAP
TOWNSHIP OF VERNON
 SUSSEX COUNTY, NEW JERSEY
 SCALE: 1" = 100' NOVEMBER, 2017
RICHARD A. SCHULZ, P.E., P.L.S.
 SPATIAL DATA LOGIC
 285 DAVIDSON AVENUE
 SOMERSET, NEW JERSEY, 08873

TO SHOW COORDINATIONS AS OF DECEMBER 31, 2017