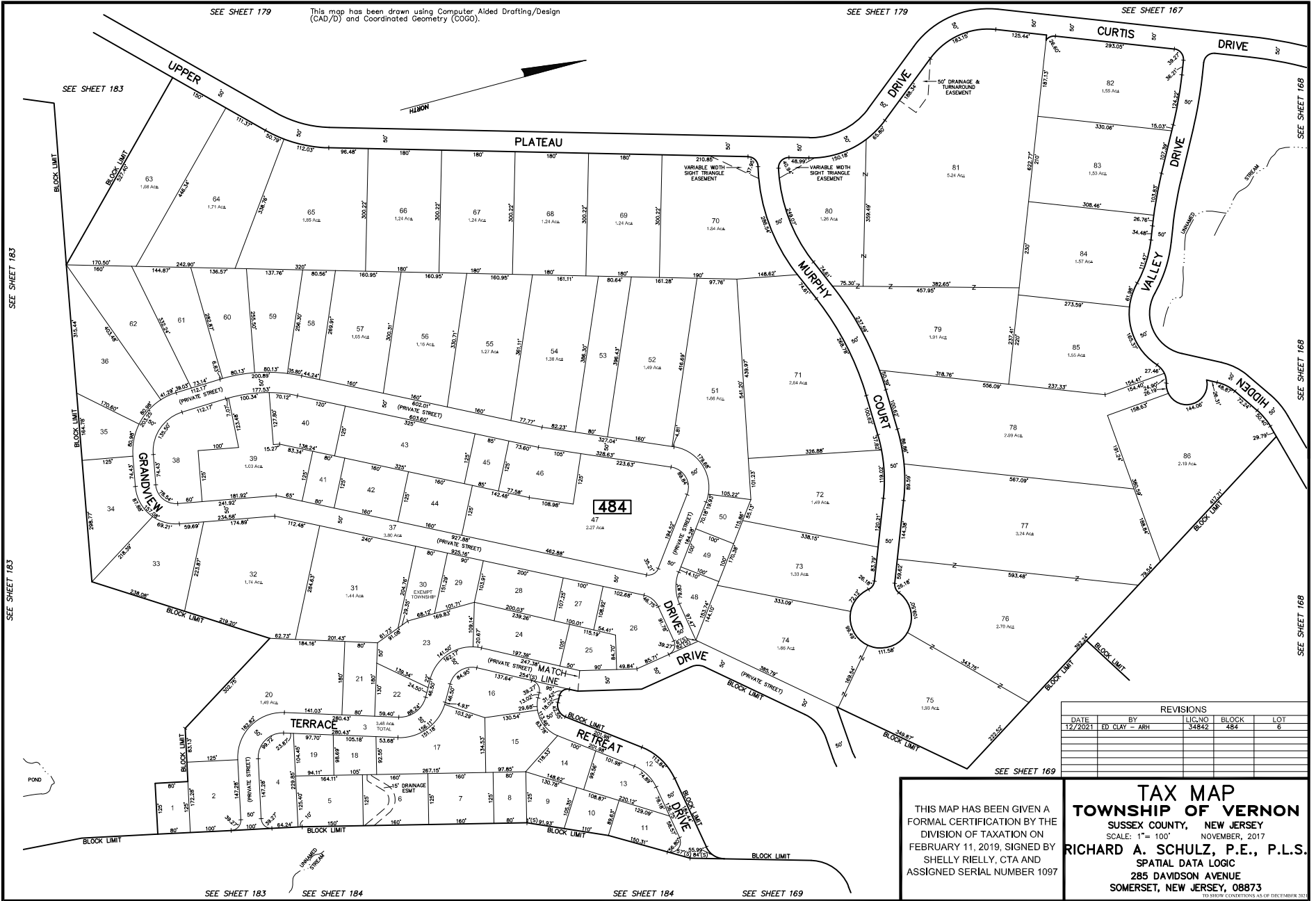


SEE SHEET 179

This map has been drawn using Computer Aided Drafting/Design (CAD/D) and Coordinated Geometry (COGO).

SEE SHEET 179

SEE SHEET 167



REVISIONS					
DATE	BY	FIG. NO.	BLOCK	LOT	
12/2021	ED CLAY - ARH		484	6	

THIS MAP HAS BEEN GIVEN A FORMAL CERTIFICATION BY THE DIVISION OF TAXATION ON FEBRUARY 11, 2019, SIGNED BY SHELLY RIELLY, CTA AND ASSIGNED SERIAL NUMBER 1097

TAX MAP
TOWNSHIP OF VERNON
 SUSSEX COUNTY, NEW JERSEY
 SCALE: 1" = 100' NOVEMBER, 2017
RICHARD A. SCHULZ, P.E., P.L.S.
 SPATIAL DATA LOGIC
 285 DAVIDSON AVENUE
 SOMERSET, NEW JERSEY, 08873
TO SHOW CONDITIONS AS OF DECEMBER 2021