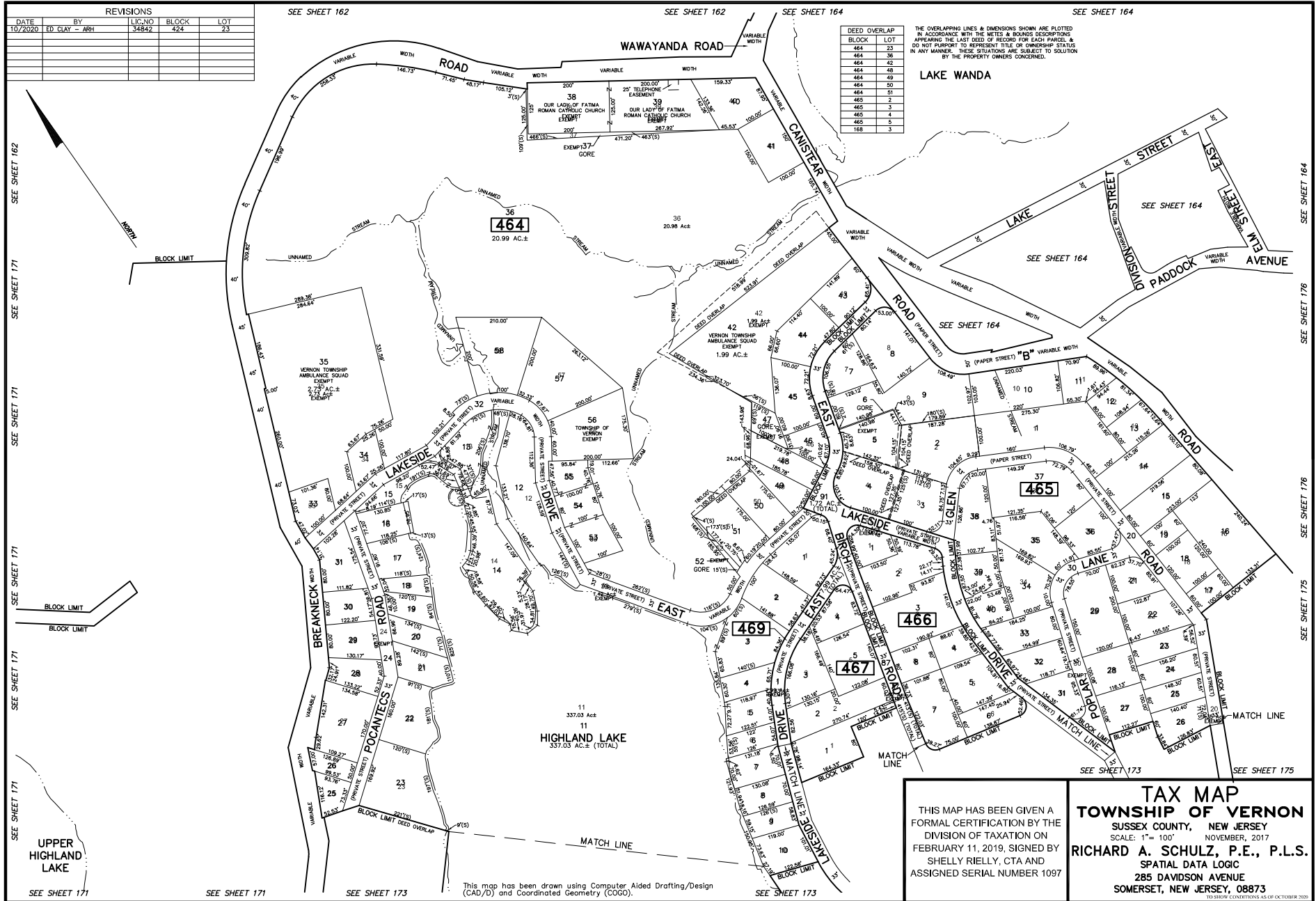


REVISIONS				
DATE	BY	LIC. NO.	BLOCK	LOT
10/2020	ED CLAY - ARH	34842	424	23

DEED OVERLAP	
BLOCK	LOT
464	23
464	36
464	42
464	48
464	49
464	51
465	2
465	3
465	4
465	5
465	6
465	7

THE OVERLAPPING LINES & DIMENSIONS SHOWN ARE PLOTTED IN ACCORDANCE WITH THE METES & BOUNDS DESCRIPTIONS APPEARING IN THE LAST DEED OF RECORD FOR EACH PARCEL & DO NOT PURPORT TO REPRESENT TITLE OR OWNERSHIP STATUS IN ANY MANNER. THESE SITUATIONS ARE SUBJECT TO SOLUTION BY THE PROPERTY OWNERS CONCERNED.



This map has been drawn using Computer Aided Drafting/Design (CAD/D) and Coordinated Geometry (COGO).

TAX MAP
TOWNSHIP OF VERNON
 SUSSEX COUNTY, NEW JERSEY
 SCALE: 1" = 100' NOVEMBER, 2017
 RICHARD A. SCHULZ, P.E., P.L.S.
 SPATIAL DATA LOGIC
 285 DAVIDSON AVENUE
 SOMERSET, NEW JERSEY, 08873
TO SHOW CONDITIONS AS OF OCTOBER 2020

THIS MAP HAS BEEN GIVEN A FORMAL CERTIFICATION BY THE DIVISION OF TAXATION ON FEBRUARY 11, 2019, SIGNED BY SHELLY RIELLY, CTA AND ASSIGNED SERIAL NUMBER 1097