

REVISIONS				
DATE	BY	LIC. NO.	BLOCK	LOT
10/2022	ERICK E. MUFF	43372	427	100,82

SEE SHEET 168

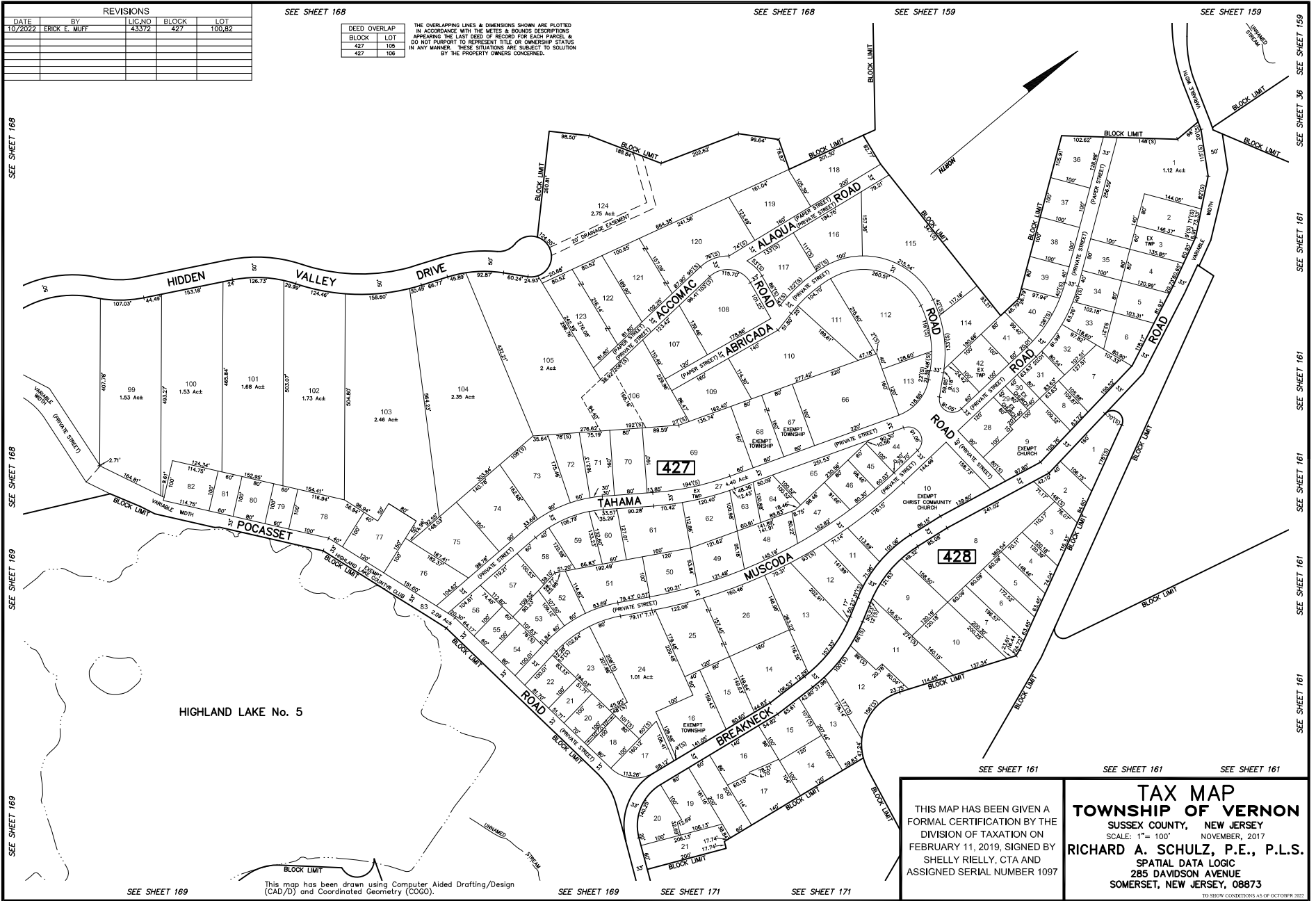
SEE SHEET 168

SEE SHEET 159

SEE SHEET 159

DEED OVERLAP
BLOCK LOT
427 106
427 106

THE OVERLAPPING LINES & DIMENSIONS SHOWN ARE PLOTTED IN ACCORDANCE WITH THE METES & BOUNDS DESCRIPTIONS APPEARING IN THE LAST DEED OF RECORD FOR EACH PARCEL & DO NOT PURPORT TO REPRESENT TITLE OR OWNERSHIP STATUS IN ANY MANNER. THESE SITUATIONS ARE SUBJECT TO SOLUTION BY THE PROPERTY OWNERS CONCERNED.



SEE SHEET 168

SEE SHEET 169

SEE SHEET 169

SEE SHEET 169

SEE SHEET 169

SEE SHEET 169

SEE SHEET 171

SEE SHEET 171

SEE SHEET 161

SEE SHEET 161

SEE SHEET 161

SEE SHEET 161

SEE SHEET 161

SEE SHEET 161

SEE SHEET 161

SEE SHEET 161

SEE SHEET 161

SEE SHEET 36

SEE SHEET 161

SEE SHEET 161

SEE SHEET 161

SEE SHEET 161

SEE SHEET 161

SEE SHEET 161

SEE SHEET 161

TAX MAP
TOWNSHIP OF VERNON
 SUSSEX COUNTY, NEW JERSEY
 SCALE: 1" = 100' NOVEMBER, 2017
 RICHARD A. SCHULZ, P.E., P.L.S.
 SPATIAL DATA LOGIC
 285 DAVIDSON AVENUE
 SOMERSET, NEW JERSEY, 08873

THIS MAP HAS BEEN GIVEN A FORMAL CERTIFICATION BY THE DIVISION OF TAXATION ON FEBRUARY 11, 2019, SIGNED BY SHELLY RIELLY, CTA AND ASSIGNED SERIAL NUMBER 1097

This map has been drawn using Computer Aided Drafting/Design (CAD/D) and Coordinated Geometry (COCO).

TO SHOW CONDITIONS AS OF OCTOBER 31, 2022