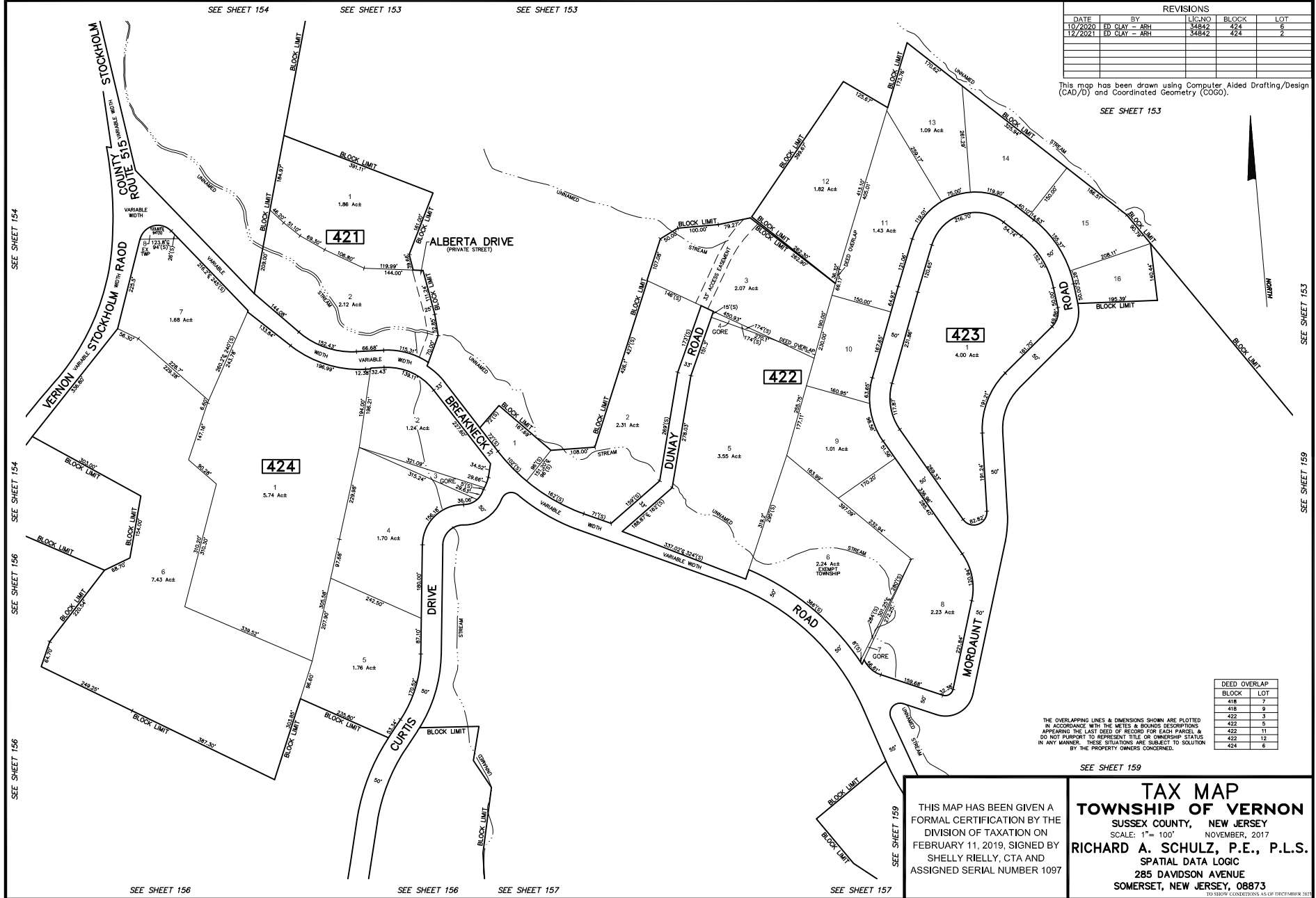


REVISIONS				
DATE	ED	BY	LIC. NO.	BLOCK
10/20/2020	ED	CLAY - ARH	34862	424
12/20/2021	ED	CLAY - ARH	34842	424

This map has been drawn using Computer Aided Drafting/Design (CAD/D) and Coordinated Geometry (COGO).

SEE SHEET 153



SEE SHEET 154
SEE SHEET 154
SEE SHEET 154
SEE SHEET 156
SEE SHEET 156
SEE SHEET 156

SEE SHEET 153
SEE SHEET 153
SEE SHEET 153
SEE SHEET 159
SEE SHEET 159
SEE SHEET 159

SEE SHEET 156

SEE SHEET 156

SEE SHEET 157

SEE SHEET 157

DEED OVERLAP	BLOCK	LOT
	418	7
	418	9
	422	3
	422	11
	422	13
	424	6

THE OVERLAPPING LINES & DIMENSIONS SHOWN ARE PLOTTED IN ACCORDANCE WITH THE METES & BOUNDS DESCRIPTIONS APPEARING IN THE LAST DEED OF RECORD FOR EACH PARCEL & DO NOT PURPORT TO REPRESENT TITLE OR OWNERSHIP STATUS IN ANY MANNER. THESE SITUATIONS ARE SUBJECT TO SOLUTION BY THE PROPERTY OWNERS CONCERNED.

SEE SHEET 159

THIS MAP HAS BEEN GIVEN A FORMAL CERTIFICATION BY THE DIVISION OF TAXATION ON FEBRUARY 11, 2019, SIGNED BY SHELLY RIELLY, CTA AND ASSIGNED SERIAL NUMBER 1097

TAX MAP
TOWNSHIP OF VERNON
 SUSSEX COUNTY, NEW JERSEY
 SCALE: 1" = 100' NOVEMBER, 2017
RICHARD A. SCHULZ, P.E., P.L.S.
 SPATIAL DATA LOGIC
 285 DAVIDSON AVENUE
 SOMERSET, NEW JERSEY, 08873

TO SHOW CONDITIONS AS OF DECEMBER 31, 2020