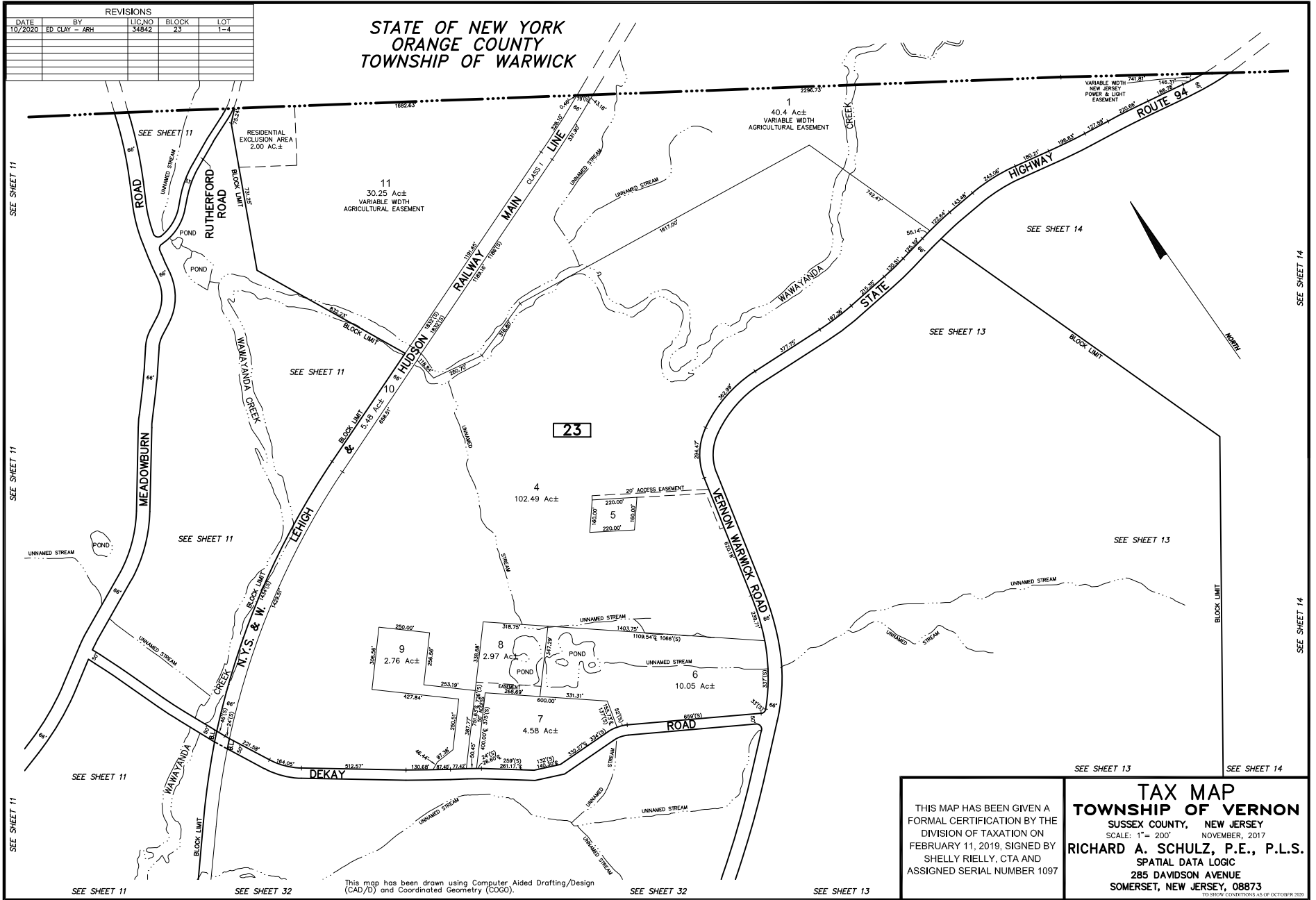


REVISIONS				
DATE	BY	LIC. NO.	BLOCK	LOT
10/2020	ED CLAY - ARH	34842	23	1-4

STATE OF NEW YORK
ORANGE COUNTY
TOWNSHIP OF WARWICK



This map has been drawn using Computer Aided Drafting/Design (CAD/D) and Coordinated Geometry (COGO).

TAX MAP
TOWNSHIP OF VERNON
SUSSEX COUNTY, NEW JERSEY
SCALE: 1" = 200' NOVEMBER, 2017
FEBRUARY 11, 2019, SIGNED BY
SHELLY RIELLY, CTA AND
ASSIGNED SERIAL NUMBER 1097

RICHARD A. SCHULZ, P.E., P.L.S.
SPATIAL DATA LOGIC
285 DAVIDSON AVENUE
SOMERSET, NEW JERSEY, 08873
TO SHOW CONDITIONS AS OF OCTOBER 2020